

ALTO/BARI SAX

JAZZ ETUDE B

STEVE PHILIPPUS

SLOW, BLUESY FEEL $\text{♩} = 80$

mf

5

9

FAST SWING $\text{♩} = 160+$

cresc.....

13

17

21

25

29

ff

JAZZ ETUDE B

TRUMPET/TENOR SAX

STEVE PHILIPPUS

SLOW, BLUESY FEEL $\text{♩} = 80$

m2

5

9

13

17

21

25

29

FAST SWING $\text{♩} = 160+$

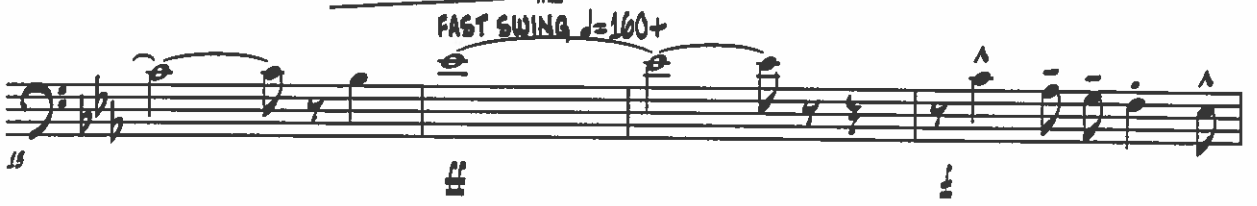
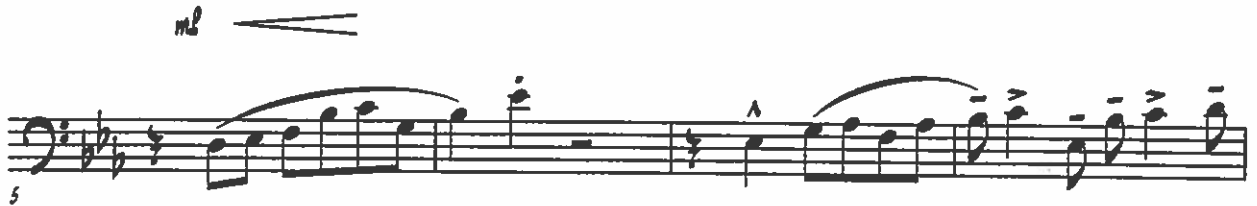
mf *cresc.*

JAZZ ETUDE B

TROMBONE

STEVE PHILIPPUS

SLOW, BLUESY FEEL $\text{♩} = 80$



JAZZ ETUDE B

GITAR

STEVE PHILIPPUS

SLOW, BLUESY FEEL ♩=80

Handwritten guitar score for "Jazz Etude B" by Steve Philippus. The score is in G minor (one flat) and 4/4 time. It consists of 11 staves of music. The first 14 measures are marked "SLOW, BLUESY FEEL ♩=80". At measure 15, the tempo changes to "FAST SWING ♩=160+". The score includes various chords such as F#9, Eb, C#7, Bb#7, Ab#maj7, G7#9, C#7, Eb7, Ab#maj7, G7#9, Eb6/Bb, Eb6/Bb, Ab#maj7, F#7, Bb7, C#7, D#7, G7, C#9, C#7, F#9, F#7, F#7, F#9, G#7, C#9, C#7, C#9, C#7, C#9, C#7, F#7, F#7, G7#9, C#7, and C#7. Performance markings include "mezzo", "cresc.", and "f".

JAZZ ETUDE B

SLOW, BLUESY FEEL $\text{♩} = 80$

STEVE PHILIPPUS

PIANO

Fmin Eb Cm7 Bbm7 Abmaj7 G7#9

Cm7 Eb7 Eb7 Abmaj7

G7b13 Eb6/8b Eb6/8b Abmaj7

CRES.

FAST SWING $\text{♩} = 160+$

F#7 Bb7 Cm7 Dm7 G7 Cm9

2

CM7 FM9 FM7 FM7

F9sus6 GM CM9 CM9 CM9

CM9 FM7 FM7 G7b13 CM CM

CM7 6 L.H. R.H.

JAZZ ETUDE B

DRUM SET

STEVE PHILIPPUS

SLOW, BLUESY FEEL $\text{♩} = 80$

1

5

9

13

17

21

25

29